

MAZDA
MX-5 CUP

FORD
FIESTA
SPRINT CUP



Welcome



Race Director Team:

Jaap Molmans/ Kees Koning
Bobbe Veldkamp / Max Braams
Annemieke Veldkamp / Wilfred Harmsen

Clerck of the course

Pierre Delettre

Stewards:

Gerard du Pré / Martijn Bins
Ronald Barbieri

Secretary of the meeting

Anne-Marie de Donder

Team Relations:

Eric de Jongh / Koen Wijckmans



Promotor:

Renata Aartsen
Dick van Elk

KOEN WIJCKMANS/ CHIEF FIESTA CUP

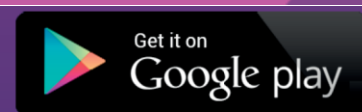
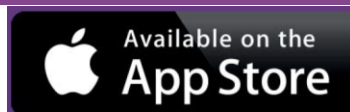


Digital Notice Board



For direct event information please download the Sportity app and insert this password:

FFSC2023
MAZDA2023
VRM2023

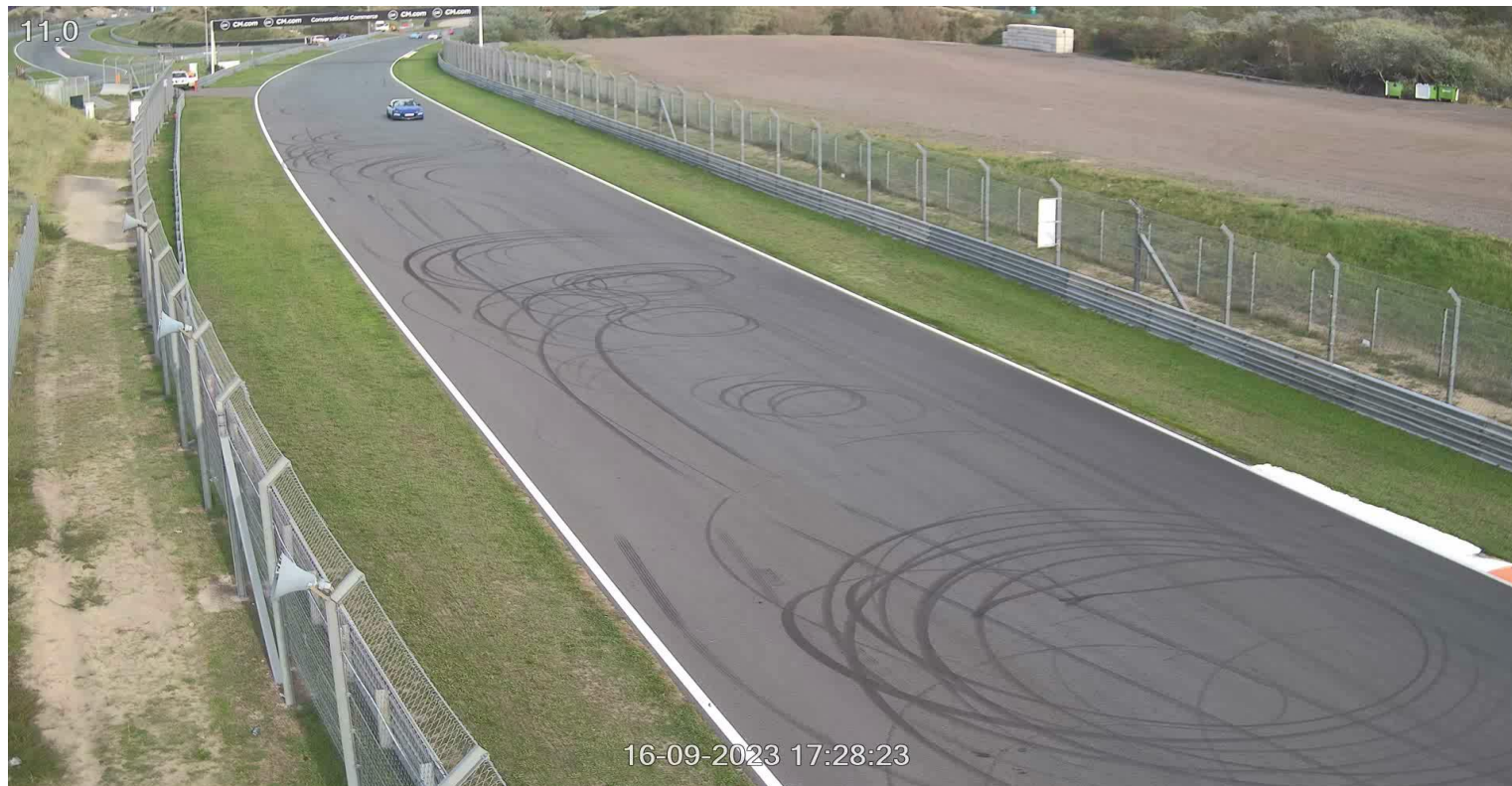


Previous race

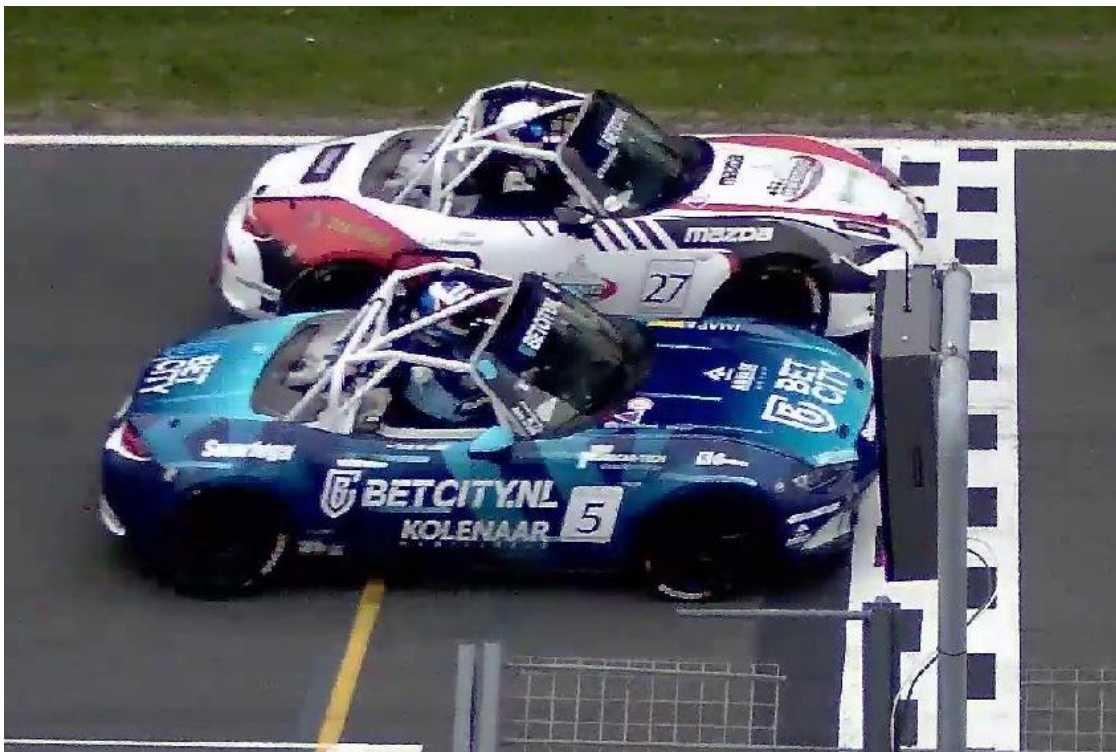


- Driving standards
- Slow driving during Qualification
- Closest finish

Slow driving during Qualification



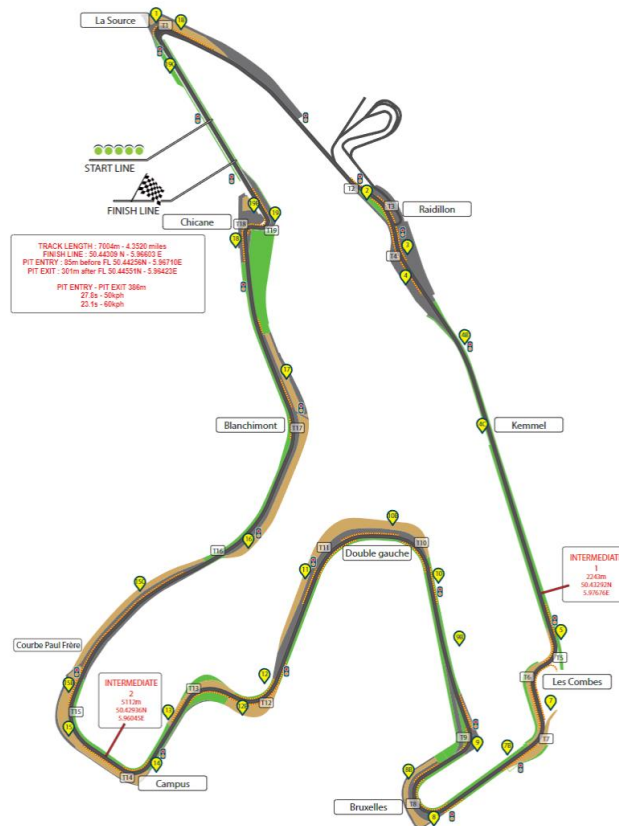
Closest finish



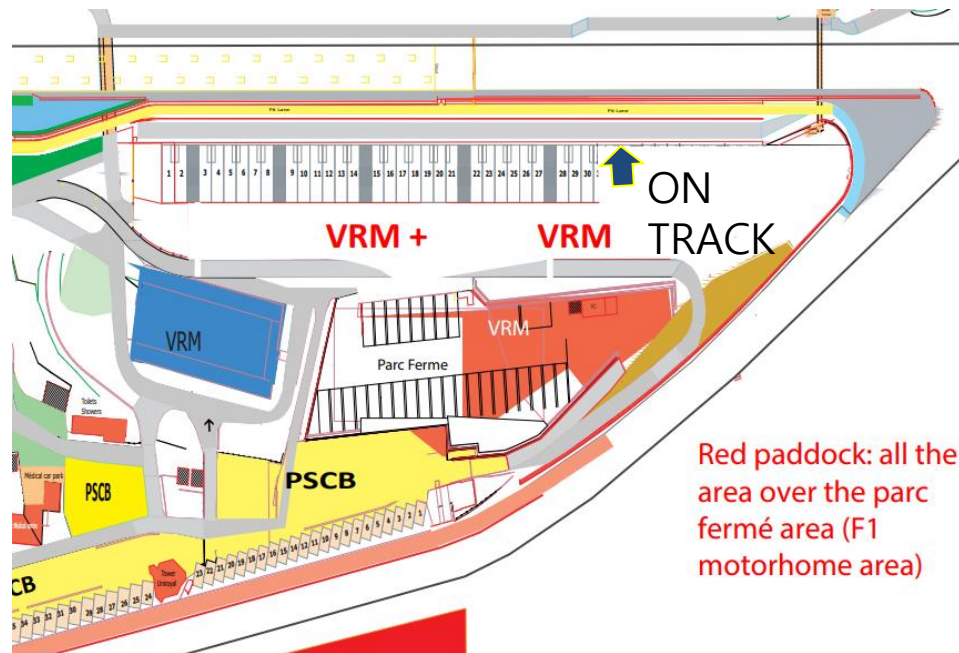
The Circuit

Circuit Spa Francohamps

- Length: **7.004** meter
- Direction: **Clockwise**
- Start: **Standing start**
- Pole Position: **Right Side**
- Penalty Area: **Underneath Podium,**
- Pitlane Speed: **60 KM/H**



Logistics Training



– Pre-Assembly Area is at **the gate at the end of the pitlane** for cars who are located in Paddock Red and Blue

– **Free Practice** and **Qualifying** will be started from the pitlane or the gate at the end of the pitlane

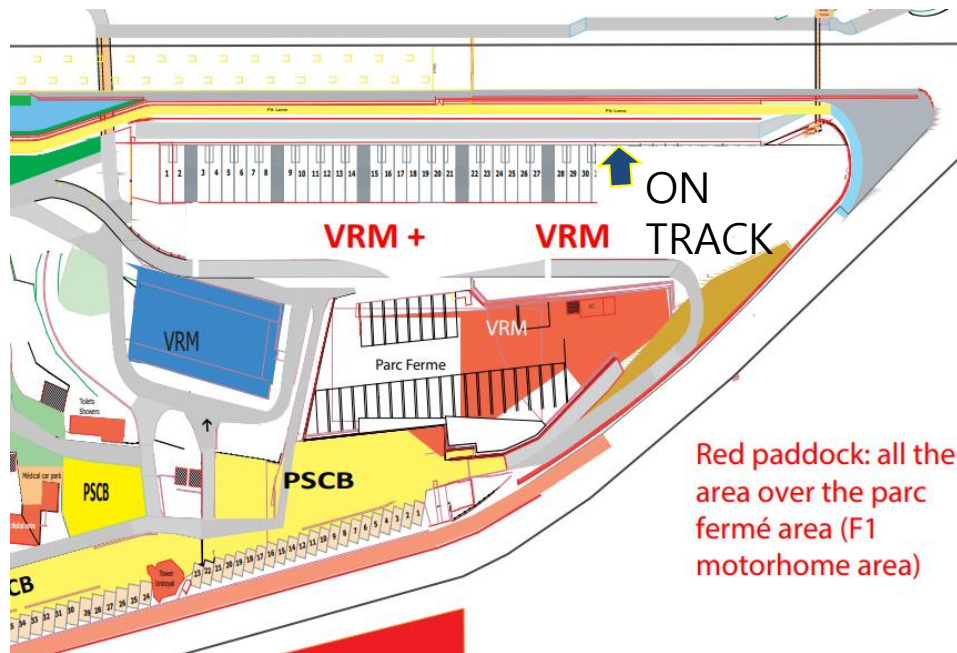
Please be **30 minutes before** the time of the start of the session

– Mazda's will line up in the fast lane. Fiesta's will line up in the working lane.

– At the **end of Free Practice**, all cars will leave the track using the **Pit Lane Entry**. Cars who have their Team on the paddock Red and Blue can leave the pitlane using the **North Gate** at the Pit Lane Exit

At the **end of Qualifying**, all cars will leave the track at T1 and head directly to **Parc Ferme**.

Logistics Race

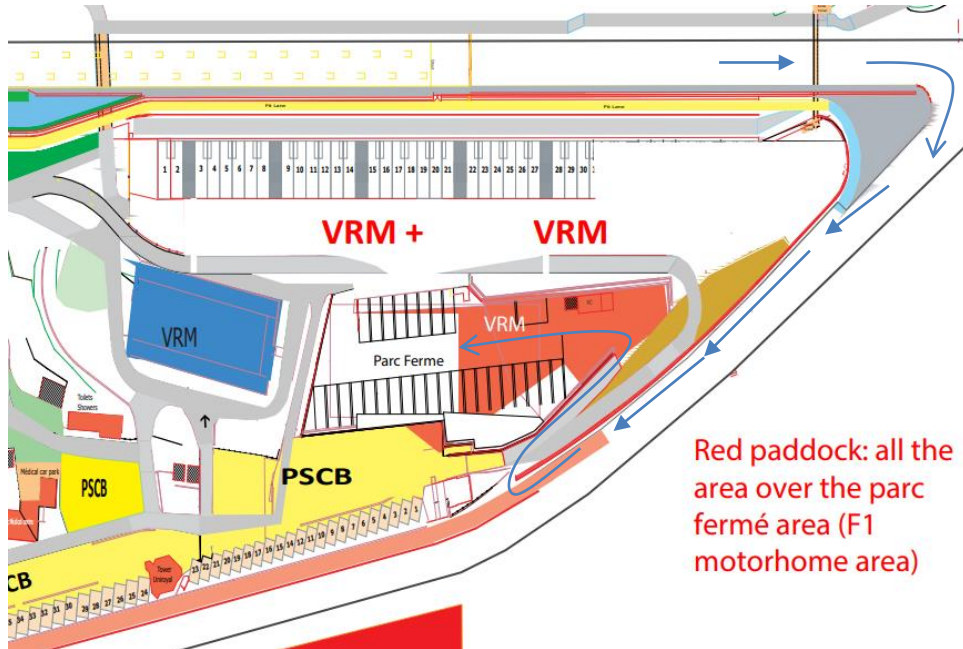


- Pre-Assembly Area is at **the gate at the end of the pitlane** for cars who are located in Paddock Red and Blue.
- Please be **30 minutes before the time of the start** of the formation lap ready
- Mazda's will line up in the fast lane. Fiesta's will line up in the working lane.
- There will be a full installation lap
- Cars will put in order on the **GRID**

At the **end** of **Race**, **all cars** will leave the track at T1 and head directly to **Parc Ferme**.

Parc Fermé

- After **turn 1**, drive into **endurance pitlane**



Red paddock: all the area over the parc fermé area (F1 motorhome area)

Safety – Stopping on Track

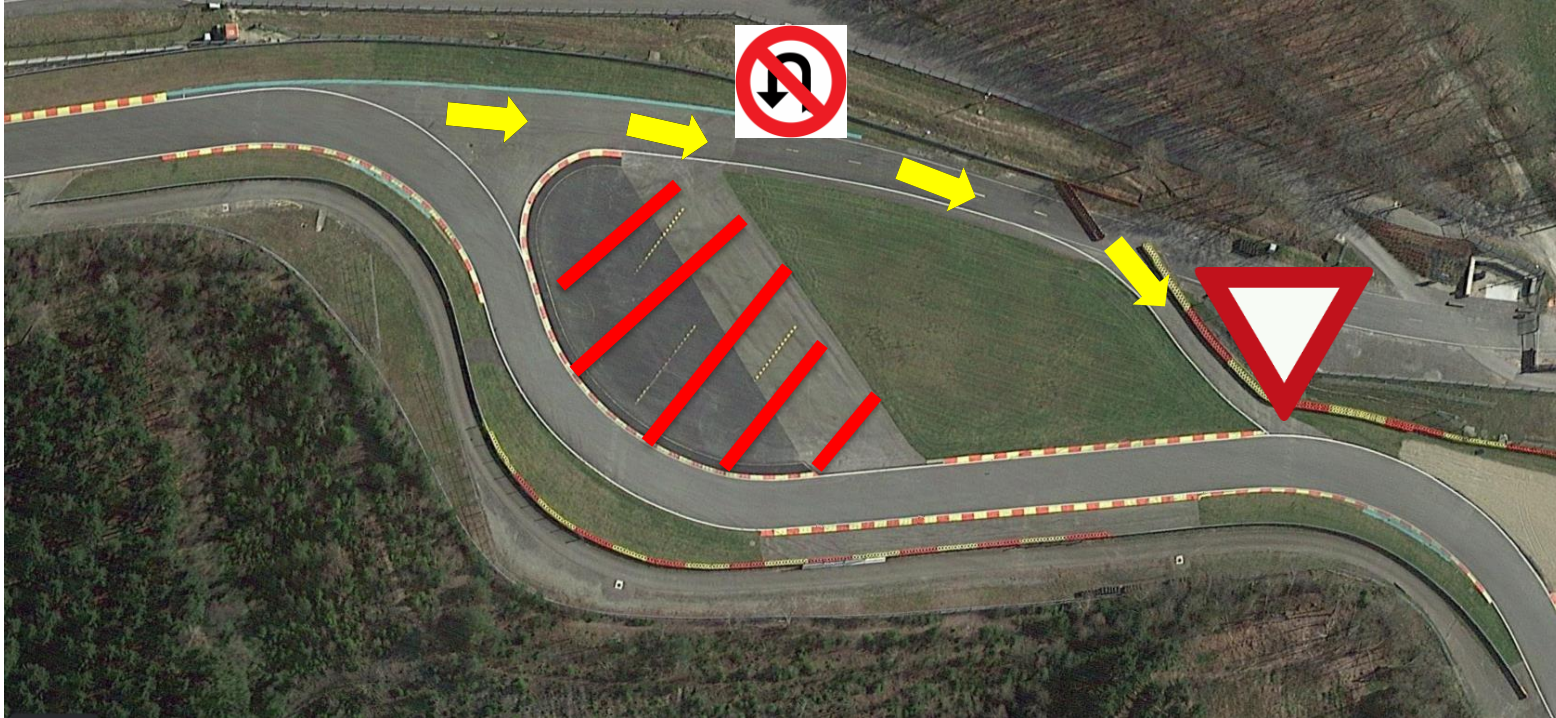
Technical Problem?

Park your car in a safe spot!

Note! Parking at RHS of track, results in quicker recovery



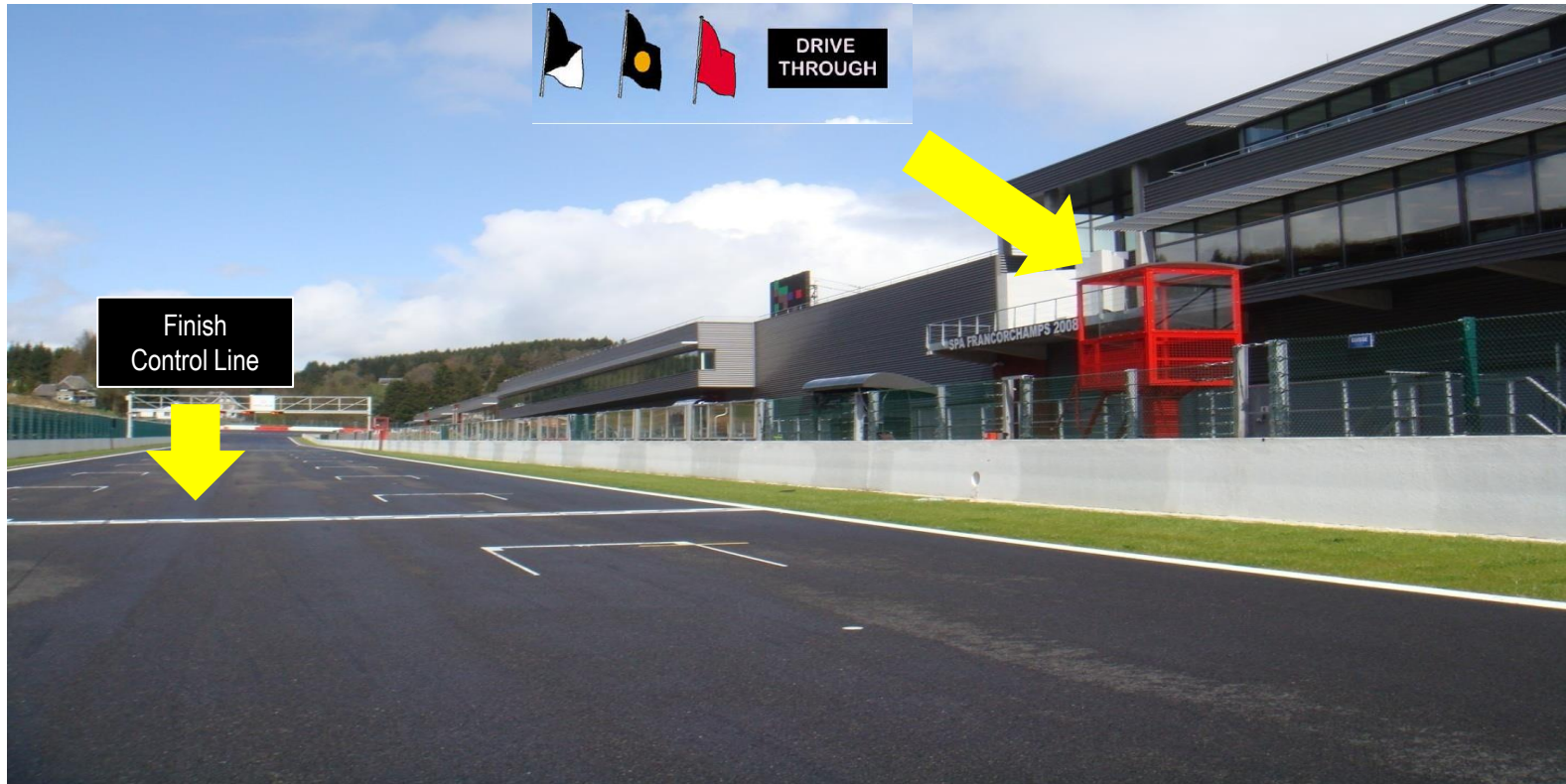
Escape road T5/T7



Escape road T5/T7



Finish Control Line | Signalling Area



Finish Control Line | Signalling Area



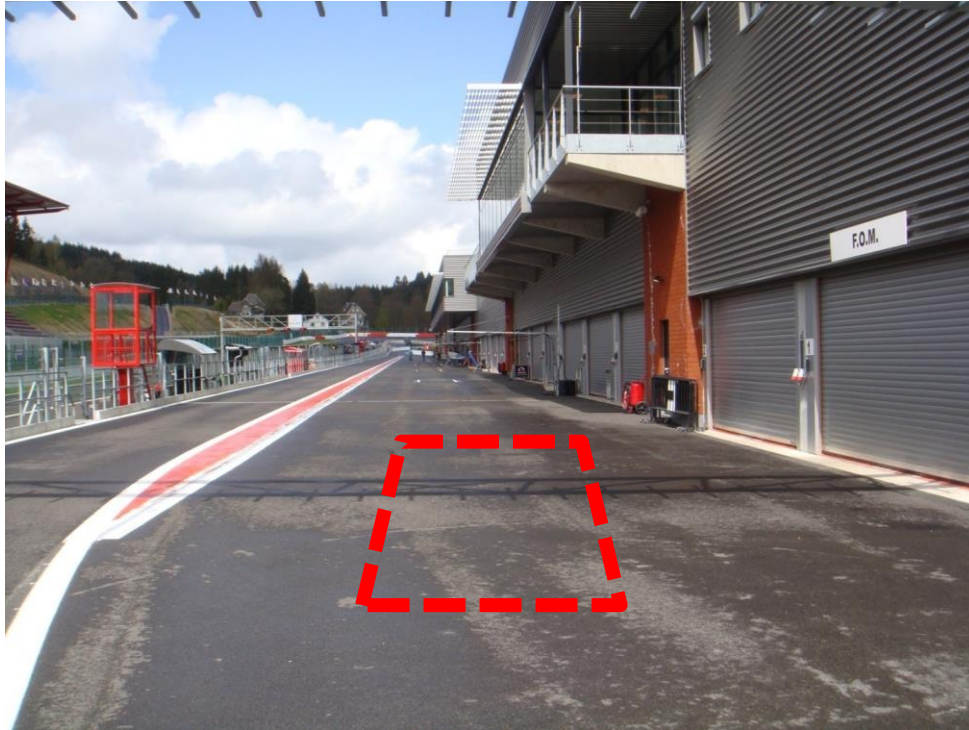
Pit in:



Pit out



Penalty Box



— Technical Flag (Meatball)

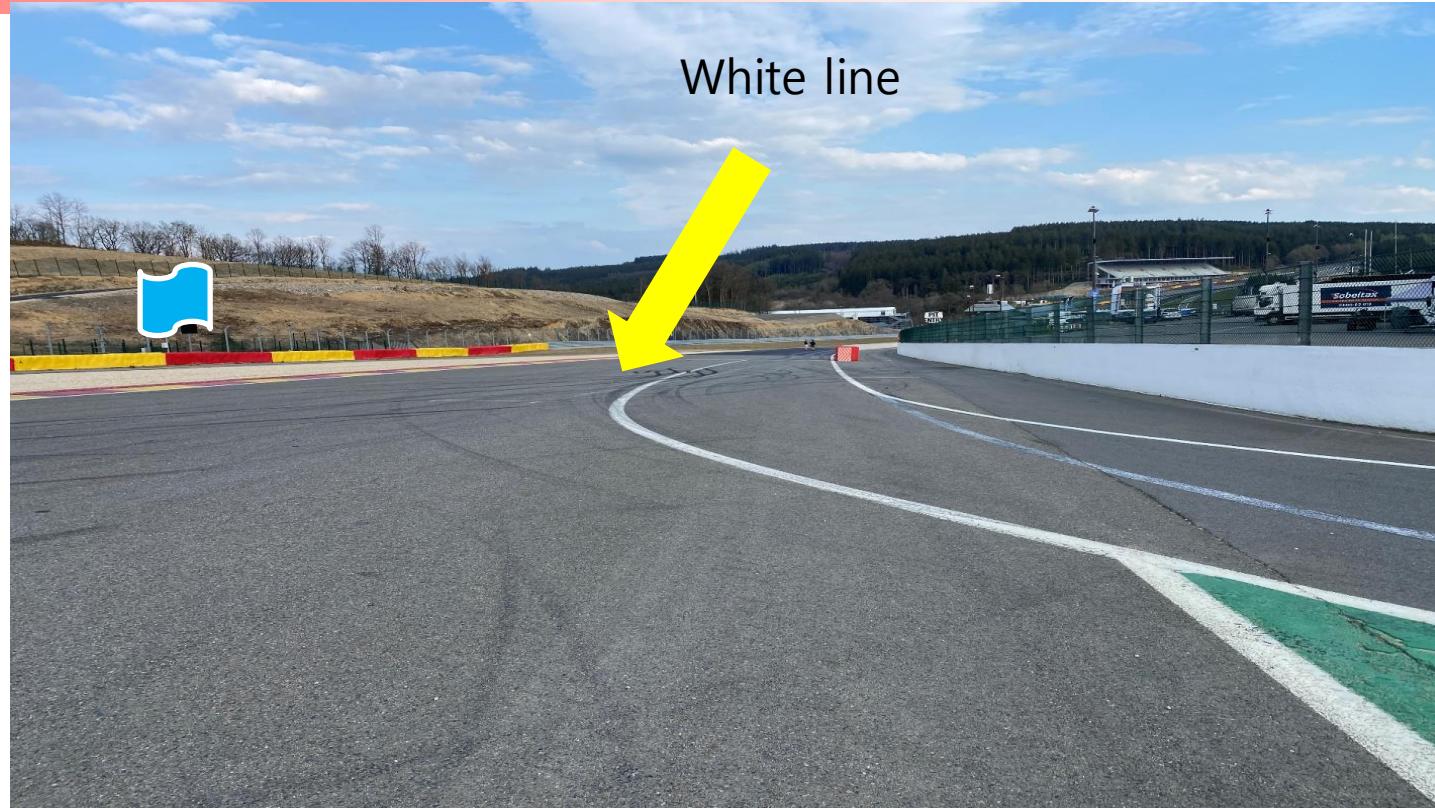


— Black Flag



~~— Warning Flag~~

White Line Pit Exit



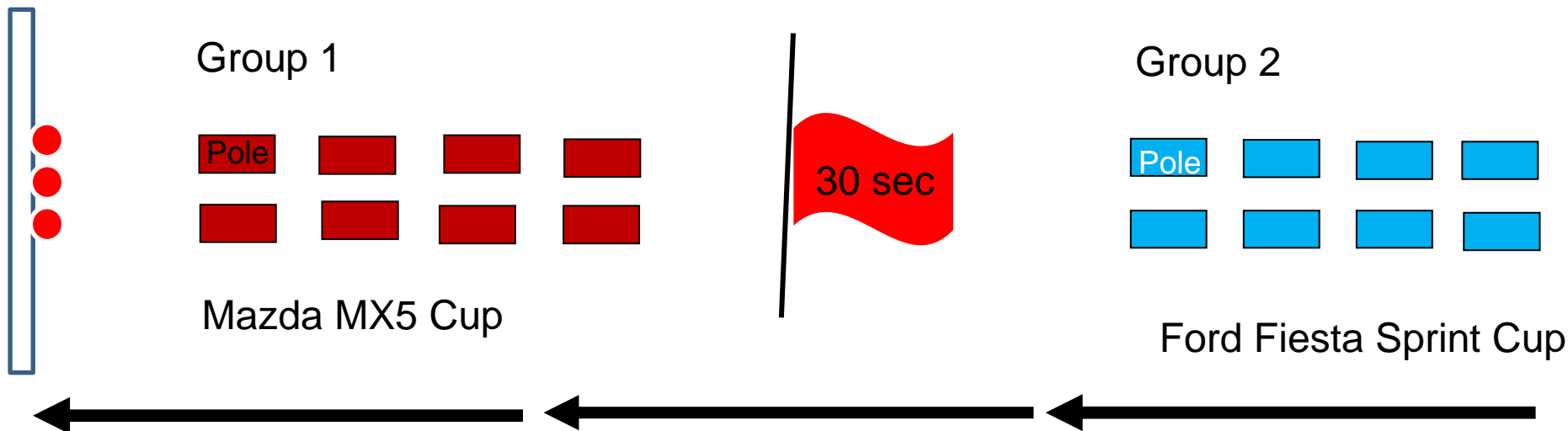
Start line



Starting Procedure / Split start

- Team members are not allowed on the grid
- At three minutes safety car will leave the grid or ignite his lamps
- Wait for the warm-up lap to start (green flag & green lights in gantry)
- Grand prix start

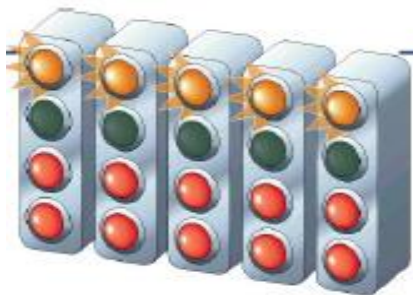
Starting
lights



Start delayed

- In the occasion of problems on the grid or during the formation lap, the Race Director may decide **not** to start the race.

The start will be aborted.



- In this case, the red lights on the starting gantry remains red and orange lights will flash.
- The sign **Start Delayed** will be displayed
- A new formation lap will follow, when the green lights on the gantry have been activated. **NO START OF THE RACE**

DIGIFLAGS



Flags and Digiflags have the same meaning

In case of contradicting flags: the safety flags go first

Flag Signals – Yellow Flag



- Reduce your speed!
- Single waved yellows: be prepared to change line
- Double waved yellows: be prepared to change line or to stop
- No overtaking till you past the green flag
- Signal of Danger

Flag Signals – Yellow Flag

Reconnaissance laps, neutralisations, Red Flag and after chequered flag:

vehicles or personnel working on track, so let them do this in a **SAFE** way

Vehicles can be driving in opposite direction



FCY



- Release the throttle to 80 KpH
- Don't brake on a straight
- No Overtaking
- Watch out for interventions vehicles on track
- Full Track green: Start racing immediately

Safety car

SC CAR
1ST LAP

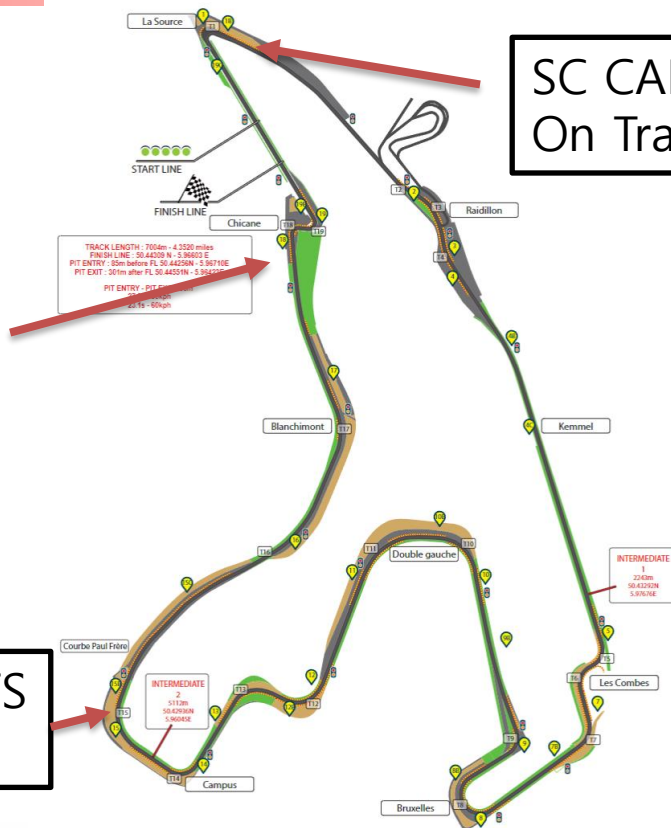
SC CAR
On Track



SAFETY CAR PROCEDURE
YELLOWS FLAGS + BOARDS "SC"
NO OVERTAKING
WATCH OUT FOR INTERVENTION VEHICLES

SAFETY CAR ENDING
RESTART FROM THE CONTROL LINE
1 SINGLE WAVED GREEN FLAG AT THE LINE
OVERTAKING ALLOWED AFTER THE CONTROL LINE

SC LIGHTS
OFF



Flag Signals – Red Flag



- Reduce Speed. Be Prepared to Stop!
- Session is Suspended
- Follow Marshall's Instructions
- In the first 2 laps of the race, complete restart of the races. Pitlane will be opened for a small period.

Free Practice & Qualifying

All cars into pitlane

Race

All cars in 1 line before the Startline
red flag line

Track Limits



Track Limits



OK

Track Limits



OK

Track Limits



NOT OK

Track Limits



NOT OK

Extra information



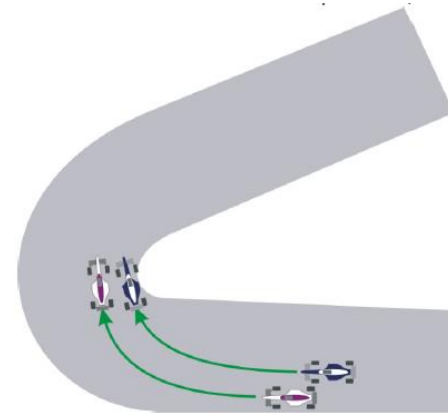
- Race 1 → Mazda: top 10 of the qualification will be reversed on the starting grid
FFSC: top 8 of the qualification will be reversed on the starting grid
- Race 2 → the results of the qualification
- Too late at the pit exit → start from the pitlane
- Leave the camera in your car after the race
- Don't fight cars of other classes

Driving Conduct

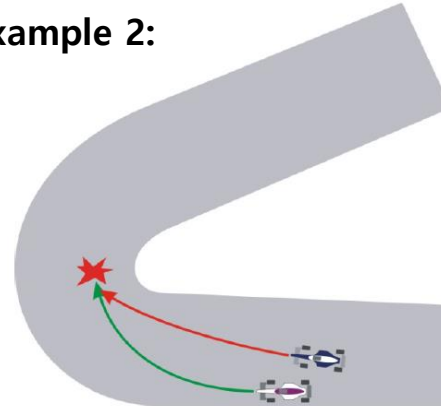
A penalty may be applied if
(causing a collision)

- The inside car overshoots the corner and crashes in the outside car (goes too fast and causes a collision)(example 2)
- The outside car does not leave space for the inside car. The Outside Car must leave at least one car width space inside, allowing the attempt to pass
- (example 3)

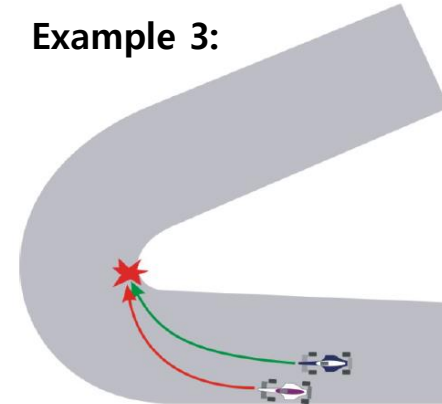
Example 1:



Example 2:



Example 3:



Driving Conduct



Examples

- Jumpstart
- Ignoring flag signals or Instructions from marshals
- Overtaking under yellow, red or after chequered flag
- Speeding under FCY, Pit lane, Yellow.
- Dangerous driving behaviour with or without contact
- Unsportsmanlike behaviour
- Change direction more than once
- Take advantage of an unclear situation
- Track limits

Driving Conduct



Penalties will be applied based on a fixed penalty list

- Deleting (fastest) lap time(s)
- Time penalty
- Position penalty
- Grid penalty
- Starting from pitlane
- Drive through
- Stop and Go
- Stewards decisions

Penalty can come with extra point(s) on your licence:

5 Points	drop of 3 places on the grid next race
8 Points	drop of 10 places on the grid next race
10 Points	Start from pit lane next race

Any
Questions